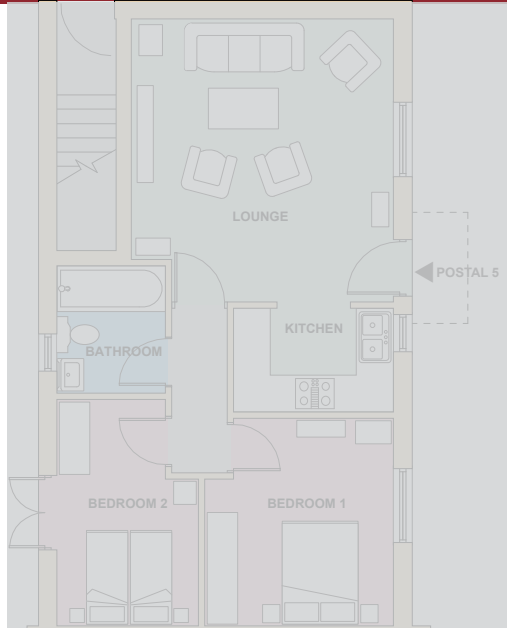


Riverside Mills - Launceston



Postal 4:-
 Hall - 6'7" x 6'7"
 Kitchen/Dining - 12'1" x 17'
 Cloakroom - 6' x 3'3"

Postal 3:-
 Hall - 23' x 3'7"
 Cloakroom - 6'0" x 3'3"
 Utility - 8'0" x 5'7"
 Study - 8'2" x 7'5"
 Kitchen/Dining - 12'8" x 12'4"

Postal 1:-
 Hall - 16'10" x 3'7"
 Kitchen - 8'3" x 8'3"
 Lounge - 10' x 14'4"
 Bed 1 - 10'10" x 9'4"
 En-suite - 5'7" x 5'
 Bed 2 - 8'4" x 8'9"
 Bathroom - 6'7" x 5'7"

Ground floor layouts - postal no's 1, 3 and 4

