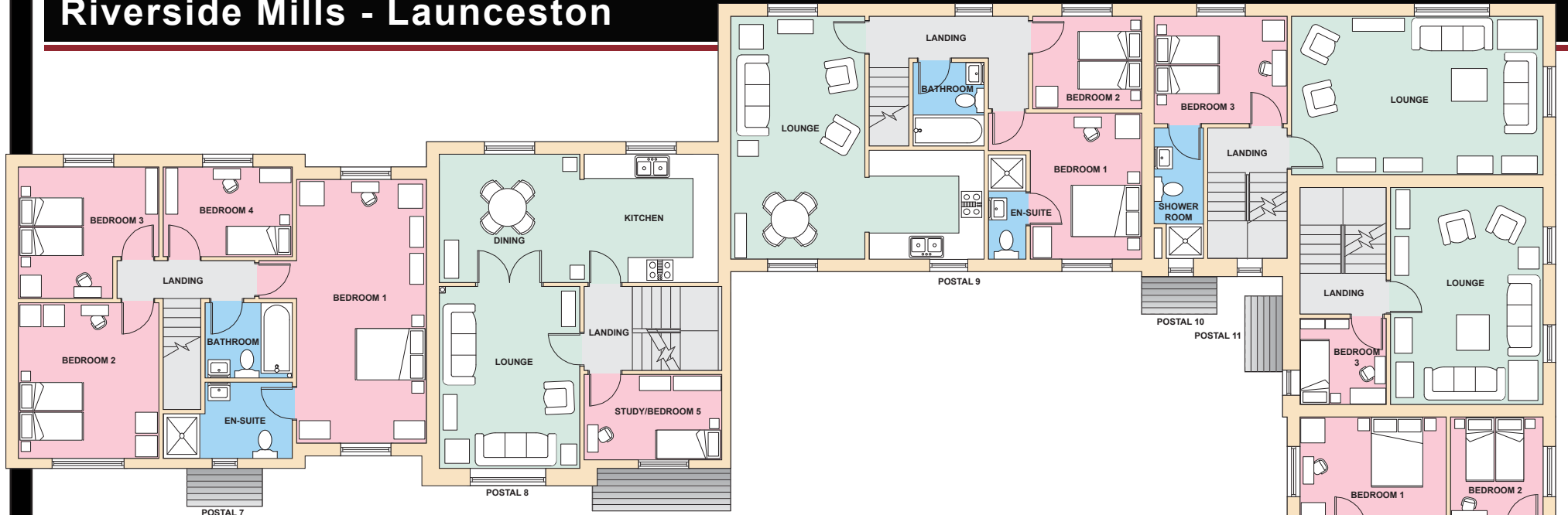


# Riverside Mills - Launceston



## First floor layouts - postal no's 7, 8, 9, 10, 11 and 12

### Postal 7:-

Bed 1 - 20'3" x 10'4"  
 En-suite - 9'10" x 5'11"  
 Bathroom - 6'7" x 5'11"  
 Bed 4 - 6'4" x 10'1"  
 Bed 3 - 9'8" x 10'9"  
 Bed 2 - 12'6" x 10'9"

### Postal 8:-

Kitchen/Dining - 21'9" x 10'1"  
 Lounge - 14'2" x 10'6"  
 Study/Bed 5 - 10'6" x 6'7"

### Postal 9:-

Kitchen - 9'6" x 8'2"  
 Lounge - 18'10" x 10'2"  
 Bathroom - 6'7" x 5'7"  
 Bed 2 - 8'2" x 5'11"  
 Bed 1 - 11'6" x 8'3"  
 En-suite - 8'2" x 2'9"

### Postal 10:-

Lounge - 19'8" x 12'2"  
 Bed 3 - 10'2" x 8'2"  
 En-suite - 9'10" x 3'7"

### Postal 11:-

Lounge - 17' x 11'6"  
 Bed 3 - 6'7" x 6'7"

### Postal 12:-

Kitchen - 9'6" x 8'2"  
 Lounge - 18'10" x 10'2"  
 Bathroom - 6'7" x 5'7"  
 Bed 2 - 8'2" x 5'11"  
 Bed 1 - 11'6" x 8'3"  
 En-suite - 8'2" x 2'9"

